



BURDEKIN CHRISTIAN COLLEGE

A ministry of Burdekin Community Church

2-12 Melbourne St Ayr QLD 4807

Phone (07) 4783 5552 Fax (07) 47835926

Email: burdekincc@bigpond.com

Website: www.burdekinchristiancollege.com.au

BULLYING AND AGGRESSIVE BEHAVIOUR POLICY

Policies, Information and Procedures

BULLYING AND AGGRESSIVE BEHAVIOUR POLICY

Introduction:

There are many definitions of bullying and aggressive behaviour suggested by writers in the field. There are also many differences of opinion in regard to whether bullying and aggressive behaviour is inherited or a product of environmental factors.

There is a danger of being too definitive in determining the meaning of bullying and aggressive behaviour.

There is also recognition that there are differing degrees of aggressive behaviour that can be difficult to detect and manage.

The College has adopted the approach of identifying from the literature a number of elements of what constitutes bullying, and a number of forms of aggressive behaviour.

Elements of Bullying:

Some of the elements of bullying as aggressive behaviour is:-

- repetitive in nature
- a hurtful action
- a desire to hurt by the aggressor
- a power imbalance such as age, power or strength
- here could be enjoyment by the aggressor
- the victim feels distressed
- can be an individual or group act.

Bullying could be physical, verbal, social and psychological.
In determining what is bullying these elements need to be considered.

Forms of Aggressive Behaviour:

Physical: Hitting, kicking, spitting, pinching, biting, throwing stones, use of weapons.

Verbal: Non-physical and includes name calling, rumour spreading, taunting and teasing.

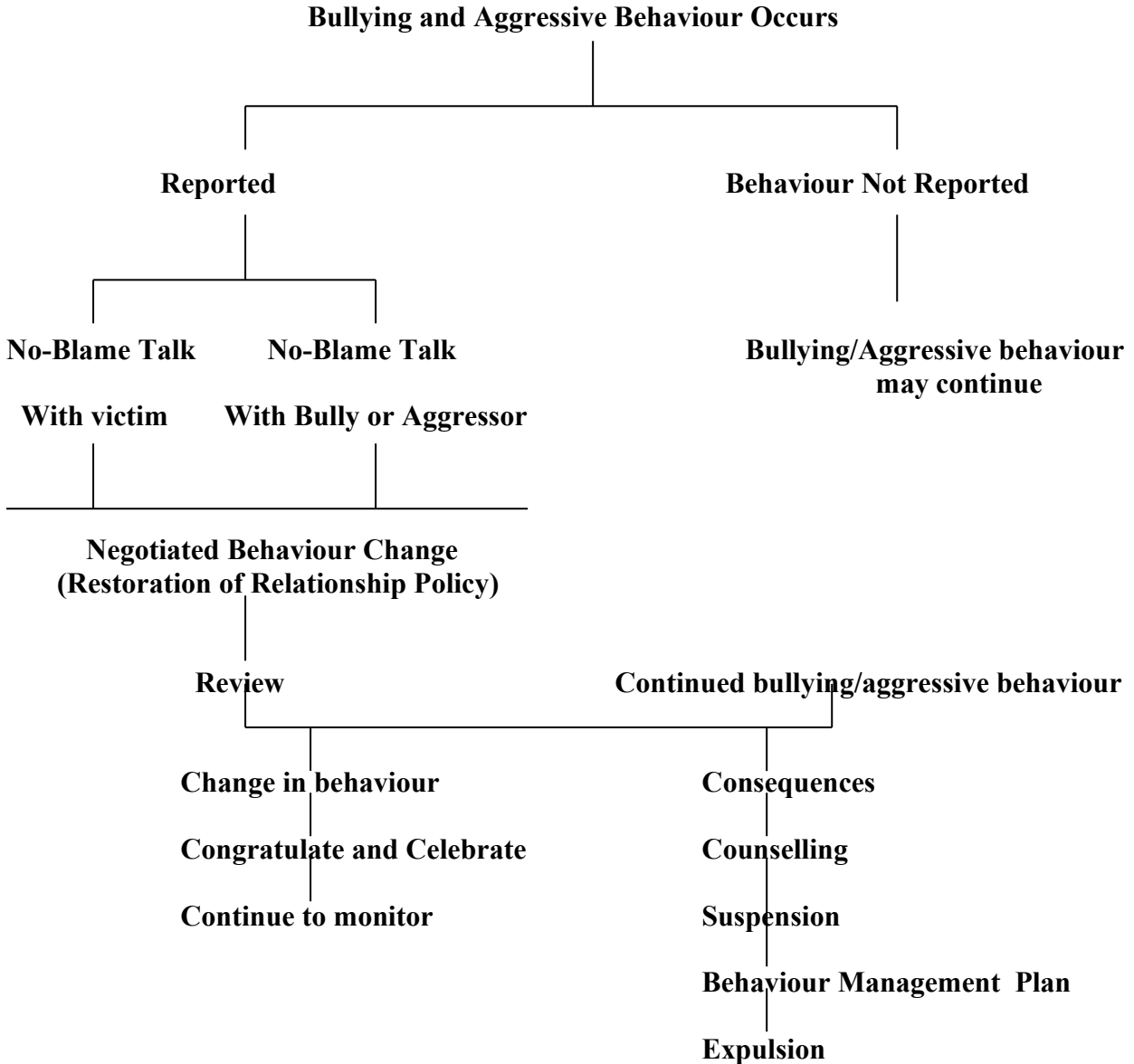
Gesture: Non-verbal and includes threatening and obscene gestures.

Extortion: Stand over tactics and threats that may involve demands for money and property.

Exclusion: Isolating others from the group.

Other elements of bullying and forms of aggressive behaviour may be added in the future.

Flow Diagram on how bullying and aggressive behaviour can be treated:



Detection of bullying and aggressive behaviour, reporting and record keeping:

Detection:-

For the detection of bullying and aggressive behaviour some strategies are suggested.

- Encourage students to report incidents to teachers.
- Request parents to report incidents that come to their attention.
- Close attention by staff in class rooms and on playground duty.
- Use of class, whole school and parent surveys to identify students at risk, trouble spots and perceptions.
- Use class sociograms to identify children who are most isolated from peers.

Reporting and Recording Keeping:

Bullying and Aggressive Incident Report Form.

Name of notifying person	
Names of bullies/aggressors	
Names of victim/victims	
Names of witnesses	
Time when the incident happened	
Place where incident happened	
Description of incident	
Descriptions of further incidents.	

Encouraging Students To Act Properly when a Bully or Aggressive Behaviour Incident Occurs:

The following are some strategies students can use:-

- Be assertive. State “leave me alone”.
- Restrain from retaliating with physical or verbal aggression.
- Ignore it. It may stop.
- Laugh it off. Use humour.
- Build your own protection by establishing friends.
- Avoid high risk places and times.
- Talk about it with others who can help to decide what action to take.
- Report incidents.

Reducing Opportunities for students to engage in bullying or aggressive behaviour:

The following are some suggestions:-

- Principal to supervise before school.
- Teachers to be in classrooms by 8.40am.
- No students are to be in classrooms during breaks.
- Staff are in allocated areas for playground duty and are constantly roaming.
- All teaching staff to be on duty in collection area.
- High risk areas to be identified and monitored more closely.
- Students to be taught acceptable behaviour when they are close together.

The Importance of Leadership:

Some suggested strategies to be undertaken by the school leadership:-

- There must be an acknowledgement that the College is not immune from bullying and aggressive behaviour.
- The Principal is personally responsible for the implementation of this Policy.
- The Principal speaks to students about bullying and aggressive behaviour regularly at parades and assemblies.
- Staff are informed about incidents.
- Incidents are reported to monthly Board Meetings.
- The Principal deals with incidents immediately.
- Articles are included in the Weekly Bulletin and on the College’s web page about bullying and aggressive behavior.
- The College subscribes to sources of information on bullying and aggressive behaviour.

The Need for Clear Expectations:

Such expectations could include:

- Students are aware of what is bullying and aggressive behaviour.
- Students are aware of how they can respond as a victim.
- Students are aware of the consequences if they are bullies or exhibit aggressive behaviour.
- Staff are informed of the Policy at induction at the beginning of the year and at staff meetings.